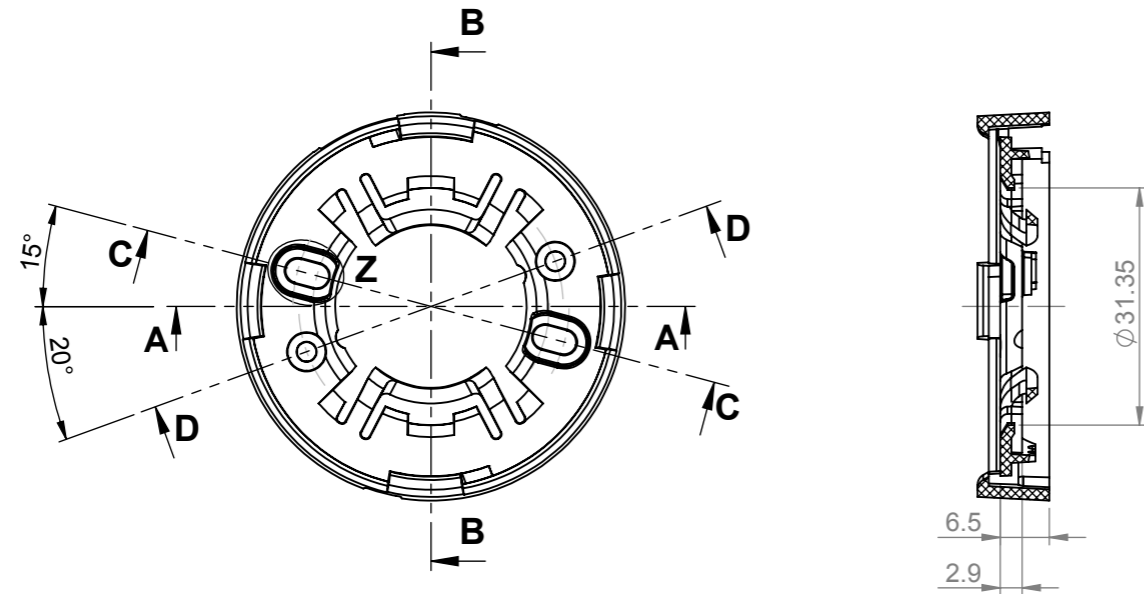
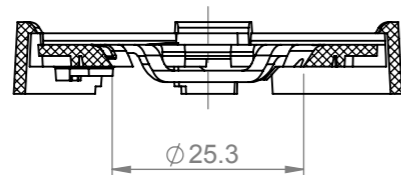


# CUSTOMER USE ONLY

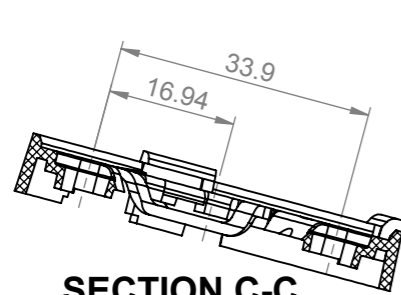
REV.	DESCRIPTION	DATE	APPROVED
D1	INITIAL CONCEPT RELEASE	05 APRIL 2013	
D2	LEAF SPRINGS ADDED. P. SUTTON	03 MAY 2013	



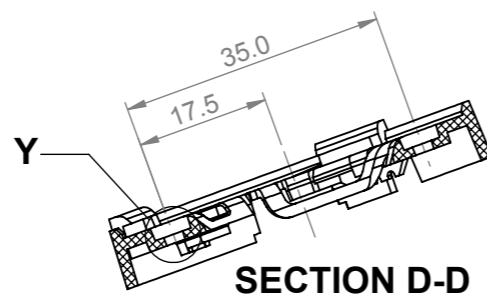
**SECTION B-B**



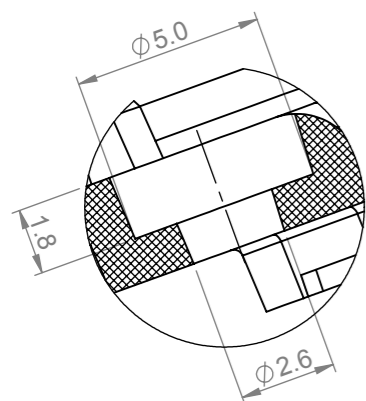
**SECTION A-A**



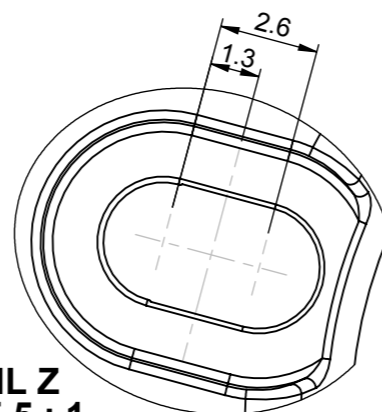
**SECTION C-C**



**SECTION D-D**



**DETAIL Y  
SCALE 5 : 1**



**DETAIL Z  
SCALE 5 : 1**

**NOTES:**

- 1 - MATERIAL: POLYCARBONATE
- 2 - FINISH: COMMERCIAL POLISH FOR ALL SURFACES.
- 3 - ITEM ( ) IS REFERENCE DIMENSION

		<b>Title</b> <b>NEWTON ADAPTER</b>		
103 Buckingham Avenue SL1 4PF, UK. Tel: +44(0) 01753 575 011 Fax: +44(0) 01753 811 359 sales@carclo-optics.com    www.carclo-optics.com		<b>Drawn by</b> P. SUTTON	<b>Customer</b> CARCLO	<b>Scale</b> 2:1
<b>THIRD ANGLE PROJECTION</b> 	<b>GENERAL TOLERANCES UNLESS OTHERWISE STATED</b> LINEAR      ANGULAR 0            ± 0.25    0            ± 1° 0.0        ± 0.1     0.0        ± 0.5° 0.00      ± 0.05   0.00      ± 0.1°	<b>CARCLO Optics</b> CONFIDENTIAL: UNAUTHORISED COPYING, DISCUSSION & DISTRIBUTION PROHIBITED		<b>DIMENSION IN mm</b> <b>Format Size</b> A3
		<b>CAD File</b> 12796_D2-Newton_Adapter		
		<b>Part N°</b> 12796	<b>Drw N°</b>	